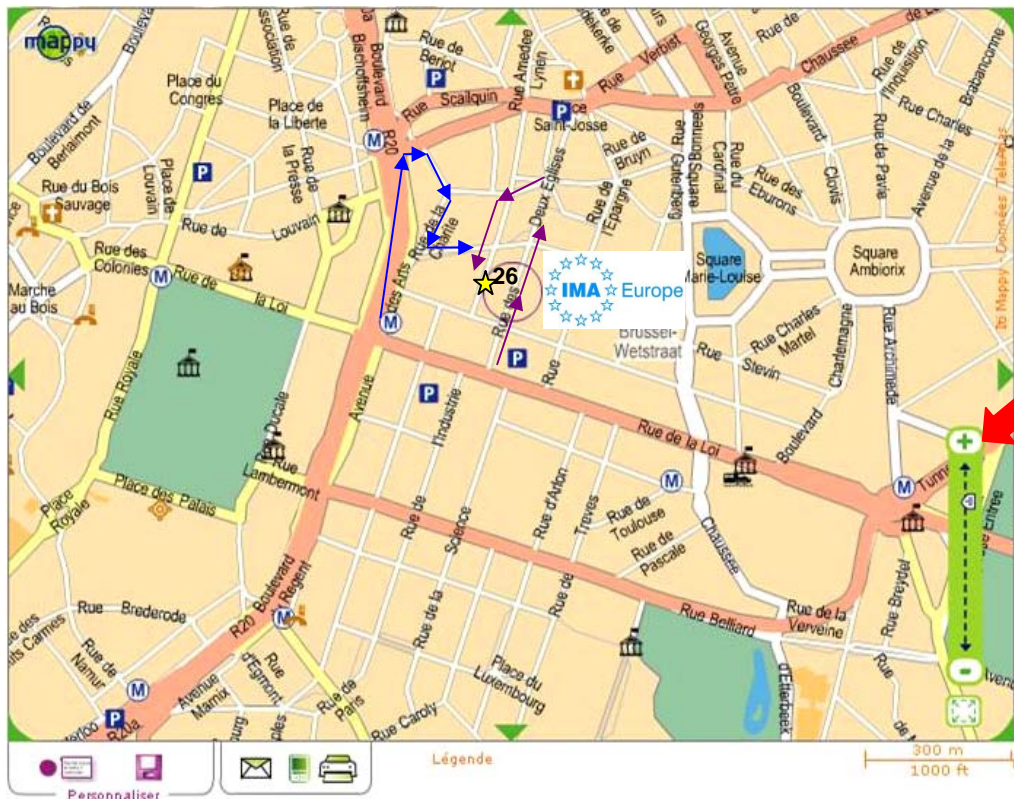


**IMA-Europe aisbl**  
**26, rue des Deux Eglises (6° floor)**  
**B-1000 Brussels**  
**Tel +32 2 210 44 10**

## Route Description



★ Entrance Parking  
(rue Marie Thérèse, 23)

E 40  
Av. de Cortenberg  
Schumann

### **By car from the Brussels “Ring Ouest” (RO) / E40 Liège-Leuven-Brussels:**

Leave the RO at exit 3 (E40 Liège-Leuven-Bruxelles) to join the E40 motorway direction BRUSSELS. On the motorway, follow the signs “Centre – Communauté Européenne” and enter the tunnel. This tunnel ends in “Avenue de Cortenberg”, which leads directly to the Schuman Roundabout. Take the second exit into “Rue de la Loi” and stay on the right. At the 4<sup>th</sup> traffic light on the “Rue de la Loi”, turn right into “Rue des Deux Eglises”, cross the rue Joseph II and the “Twin Garden” building (no. 26) is at your left.

To access the **parking** located behind the building (rue Marie Thérèse), continue on the rue des Deux Eglises (purple arrows), take the **second** street to your left and turn left again. Cross one narrow street (attention: priority from the right) with a café on the corner. The brown garage gate is at your left at number 23. Press the button “IMA-Europe”, identify yourself and ask for opening the gate. The parking places are situated at **level -3** and marked “IMA-Europe”. At the entrance of the lift, ring again and take the elevator till the 6<sup>th</sup> floor.

Other possibility (see blue arrows): continue on the rue de la Loi till the main crossing and turn right (don't enter the tunnels). At the next crossing (Place Madou) take the first right (Chée de Louvain), and turn immediately right again (just after the bus stop). Follow this street, take the second left and the first right. The parking is at 20 meter at your left side (brown gate, rue Marie Thérèse 23 - see above).

**By public transportation – from the Airport / Central Station:** Take the airport express train to Central Station (+/- 20 minutes) from there you can take the Metro line 1 (direction Stockel) or Metro line 5 (direction Hermann-Debroux). Get off at “Arts-Loi” (2 stops) (+/- 5 minutes). When you come out of the Metro, walk in the opposite direction of the traffic into the rue de la Loi and take the second street to your left (rue des Deux Eglises). Our office is located at number 26, 6° floor.

**By public transportation - from Gare du Midi:** Take Metro line 2 Simonis (Elizabeth) or Metro line 6 Roi Baudouin and get off at Arts-Loi (6 stops) (see above).